

Switch_{on} in Style and stay Connected

with the New *pipelli* Range

Made in South Africa



pipelli
Leading the way



LESCO

WIRING ACCESSORIES

The **pipelli** modular range of switches and sockets were designed and developed and now manufactured in South Africa by LESCO.

pipelli provides an entirely new, exciting and refreshing appearance, yet still retains the small stylish switch South Africans have become used to and have grown to love over the years.

With TOTAL control over all aspects of the product and the production, LESCO is able to ensure all the products conform to approved safety standards, as well as quality that assures lifelong durability and reliability.

IMPORTANT: The new consumer protection act due to come into affect shortly, makes it illegal to sell unsafe products – that do not comply with S.A.'s obligatory safety standards. Furthermore, the new legislation provides the consumer with considerably more power to act against ALL of the suppliers and or manufacturers, jointly or severable, for supplying faulty and or non compliant products, or where damage to property or personal harm is caused.

pipelli and other LESCO products can be used with absolute confidence.

HIGH IMPACT POLYCARBONATE. LONG LIFE SWITCH MECHANISM

Flush Switches 100 x 50 complete with white cover.



Flush Switches 100 x 100 complete with white cover.



Flush Accessories complete with white cover (100 x 50) Any combination can be assembled by using the blank plates and loose accessories.



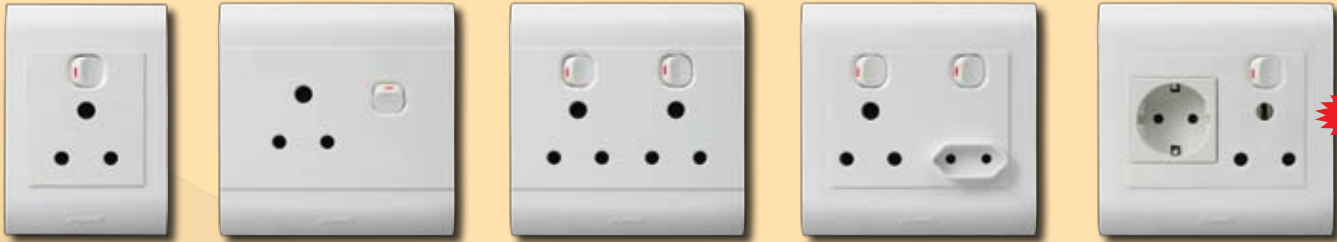
Flush Accessories complete with white cover (100 x 100) Any combination can be assembled by using the blank plates and loose accessories.



WIRING ACCESSORIES

HIGH IMPACT POLYCARBONATE. LONG LIFE SWITCH MECHANISM

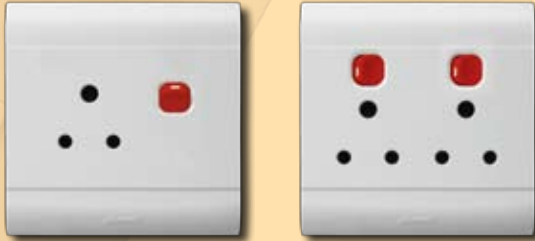
Flush Switched sockets White complete with cover



Available soon

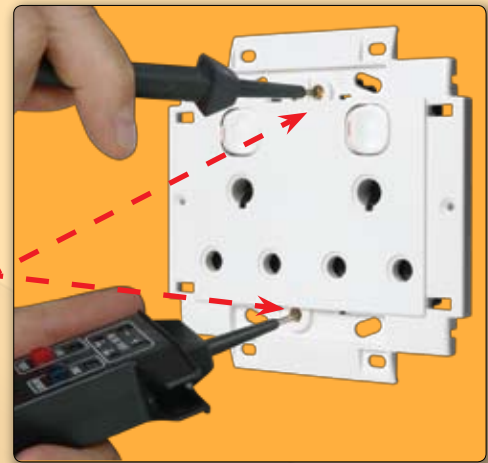
NEW

Dedicated red switched sockets complete with coverstrips



APPROVED TO SANS 164-4

THE DEDICATED SOCKETS ARE ALSO AVAILABLE IN RED



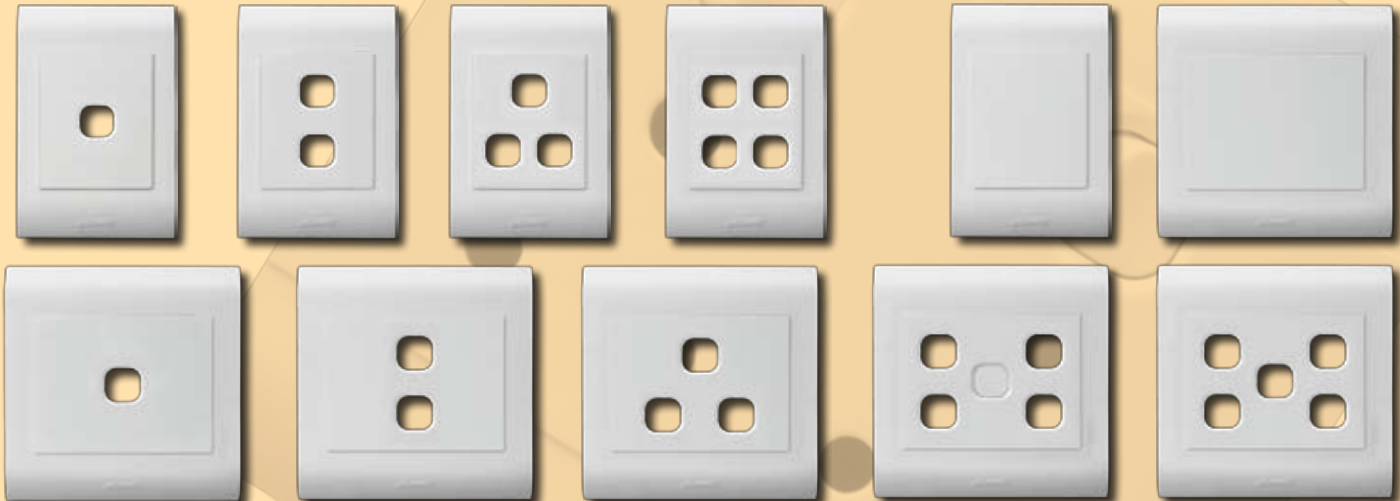
Isolators for appliances/geyser/airconditioning



Connecting the **pipelli** socket is convenient and safer because:-

1. Terminal screws are in the front
2. Maintenance and accessibility.
3. Testing for power - simply remove the cover only, and access The I-n-e terminals

Flush cover plates only



Switch modules



Module inserts S20



WIRING ACCESSORIES

HIGH IMPACT POLYCARBONATE. LONG LIFE SWITCH MECHANISM

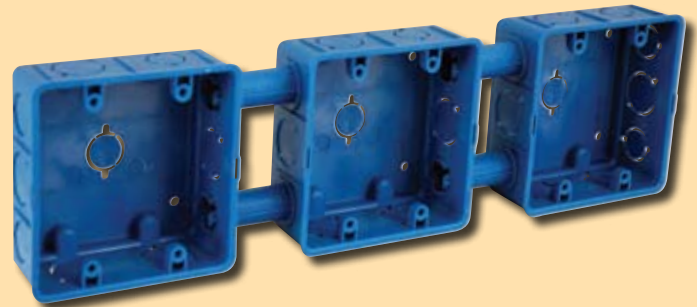
Rotary potentiometer dimmers 400 watts (100 watts less for inductive loads) 100 x 50



Rotary potentiometer dimmers 400 watts (100 watts less for inductive loads) 100 x 100



OTHER COMPLIMENTARY PRODUCTS FROM THE LESCO STABLE
From Standard Wall Boxes -



..... To Professional Solutions

